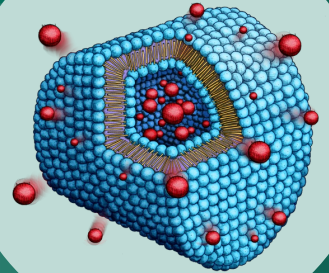
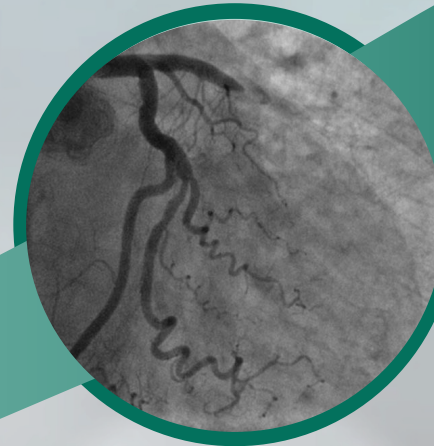
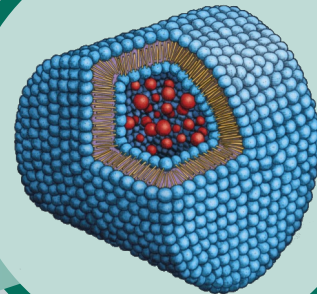
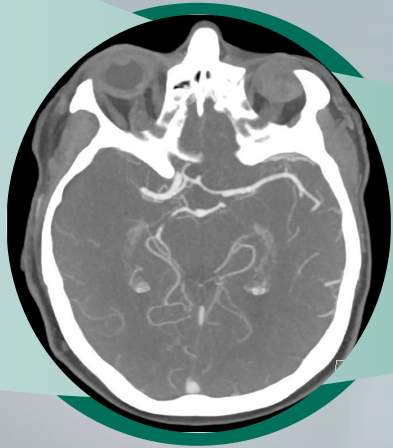


Der menschliche Körper ist gross – Wie schaffen wir es, dass ein Medikament am richtigen Ort ankommt?

acthera



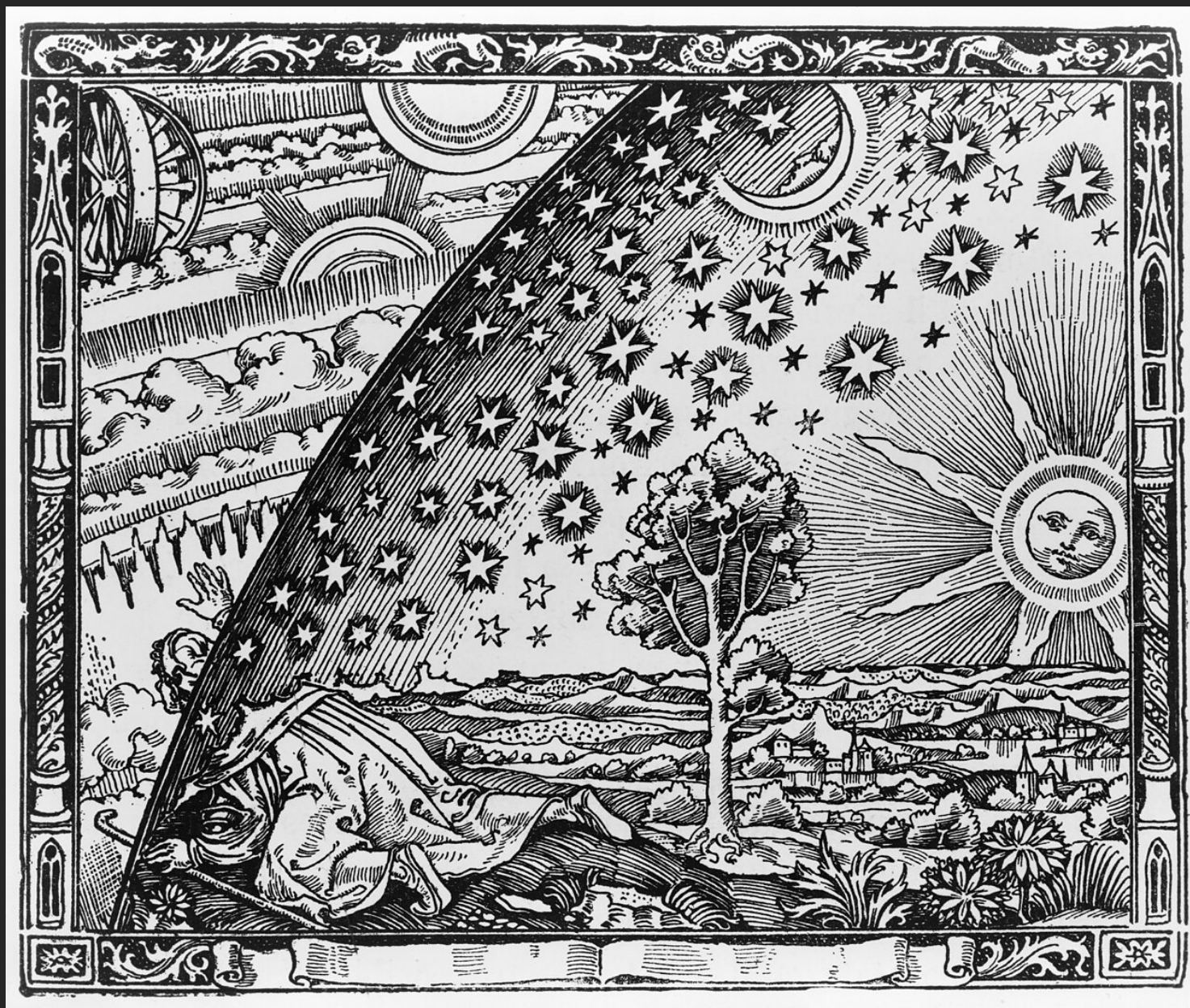
Hard-Shelled Liposomes

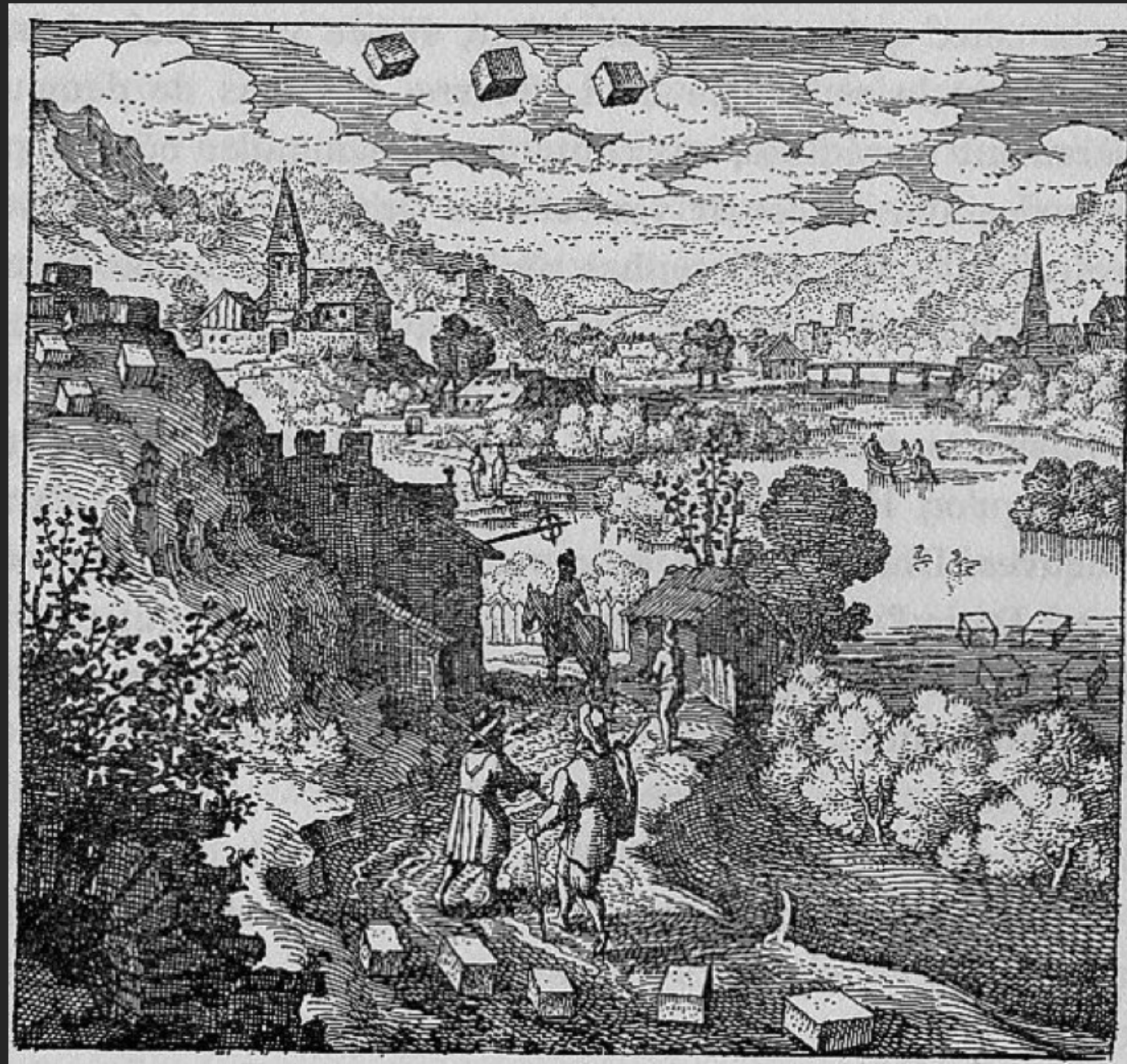
Improved thrombolytic therapy for
acute cardiovascular thrombotic events

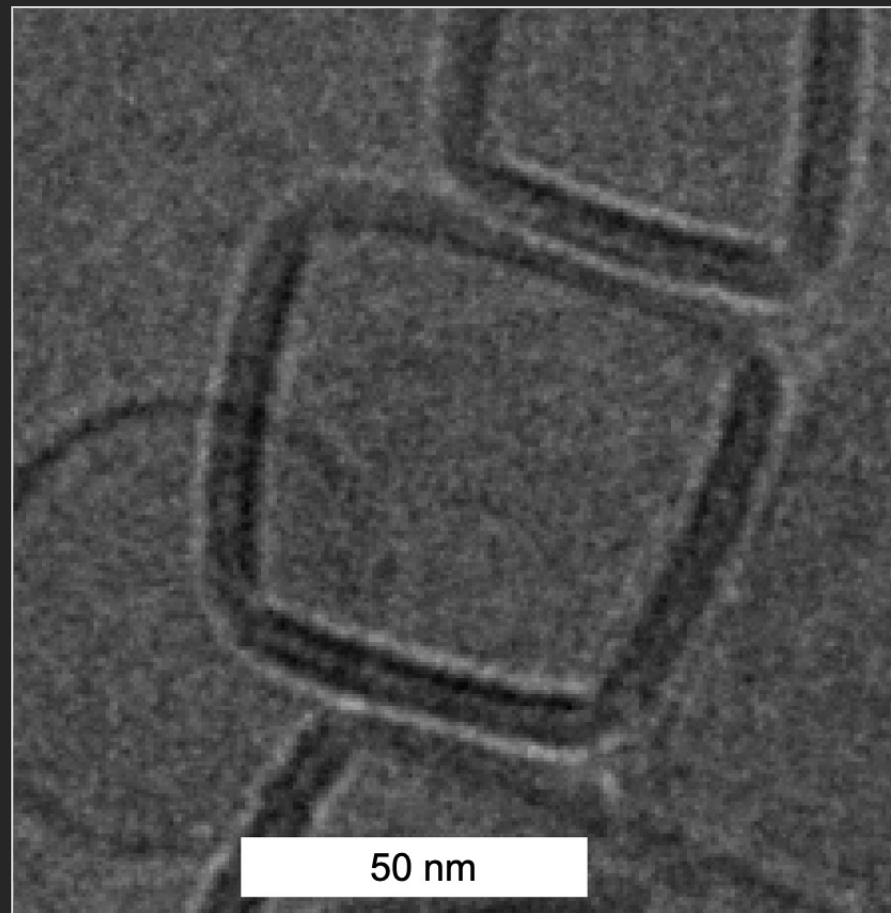
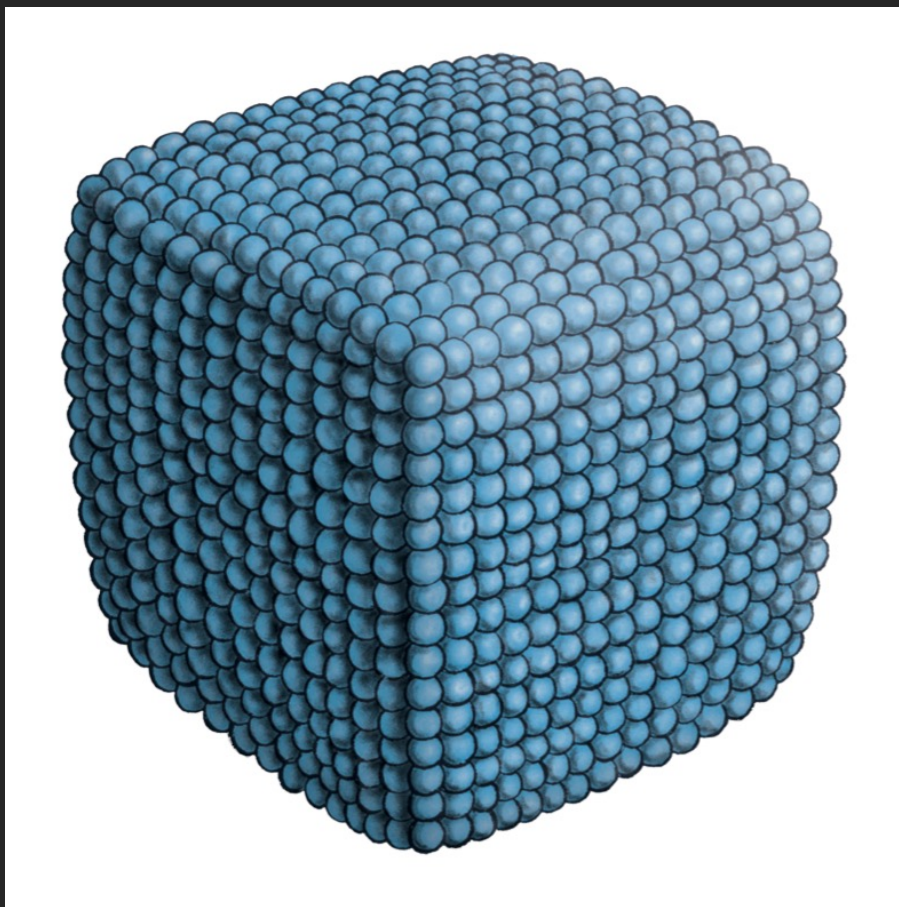
Andreas Zumbühl

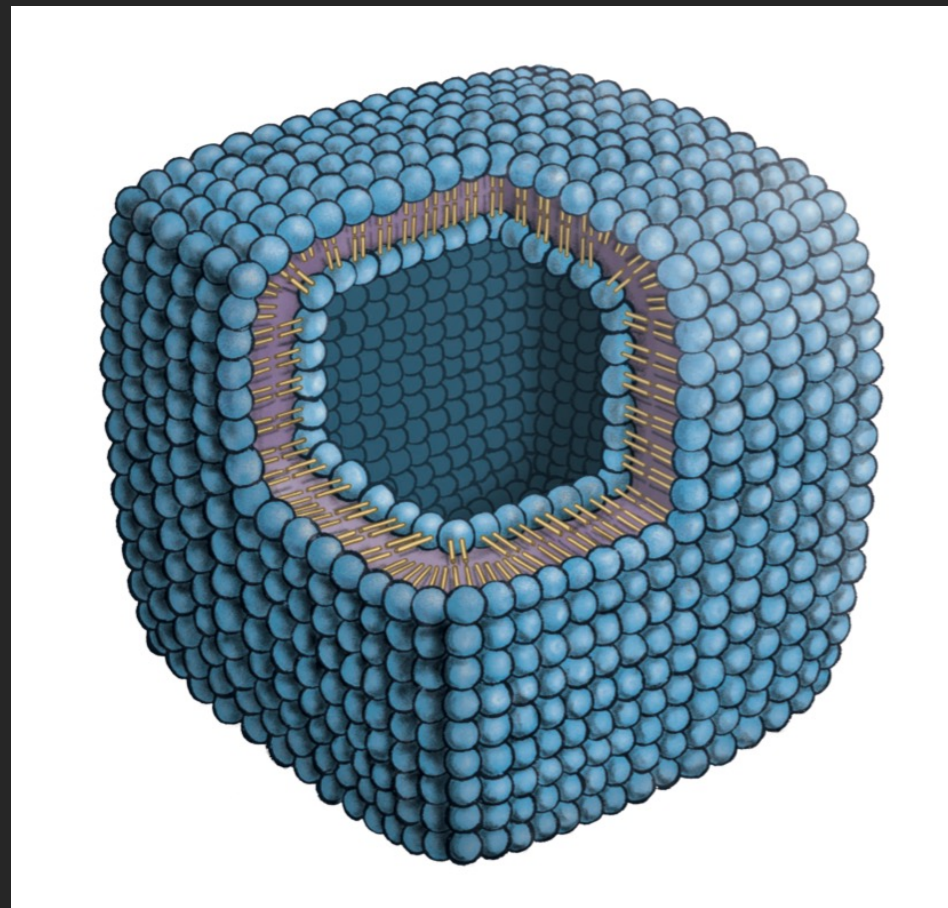
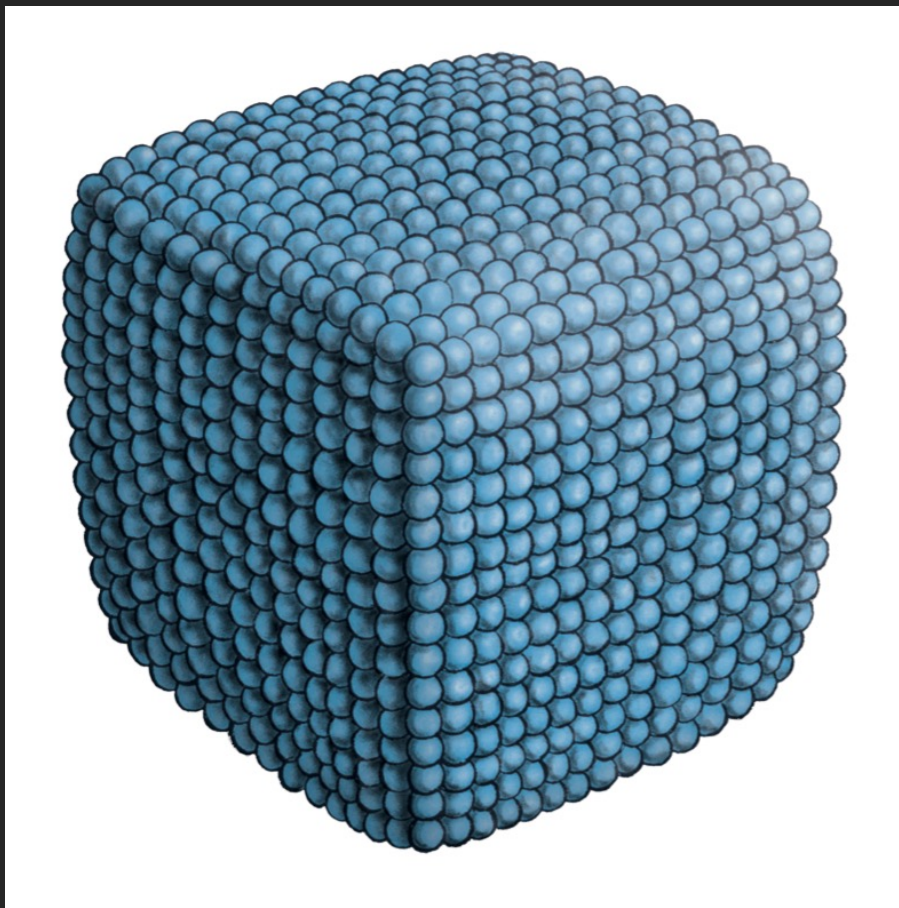
55 Minuten

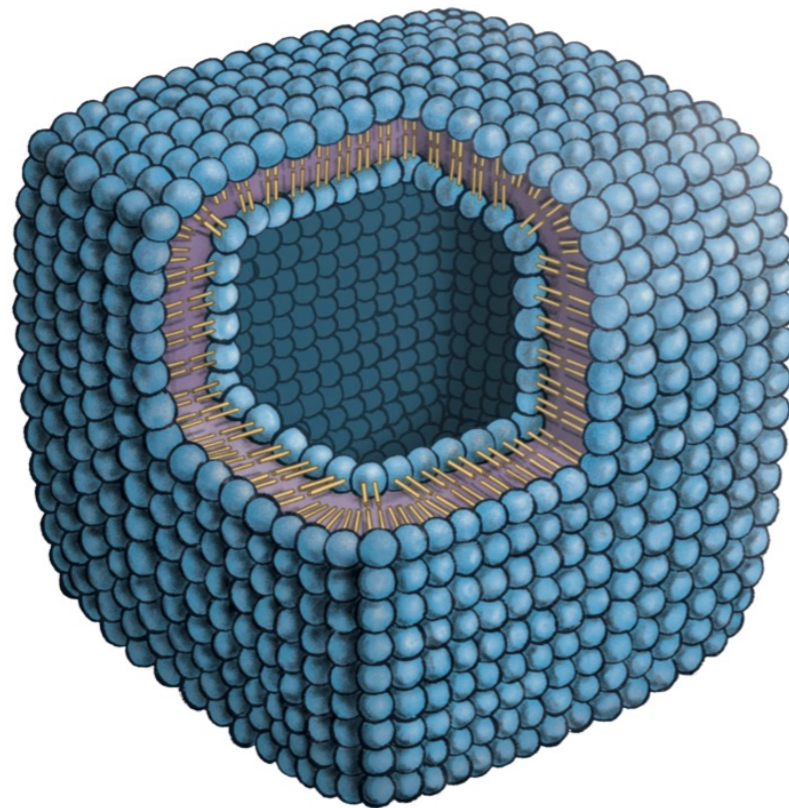
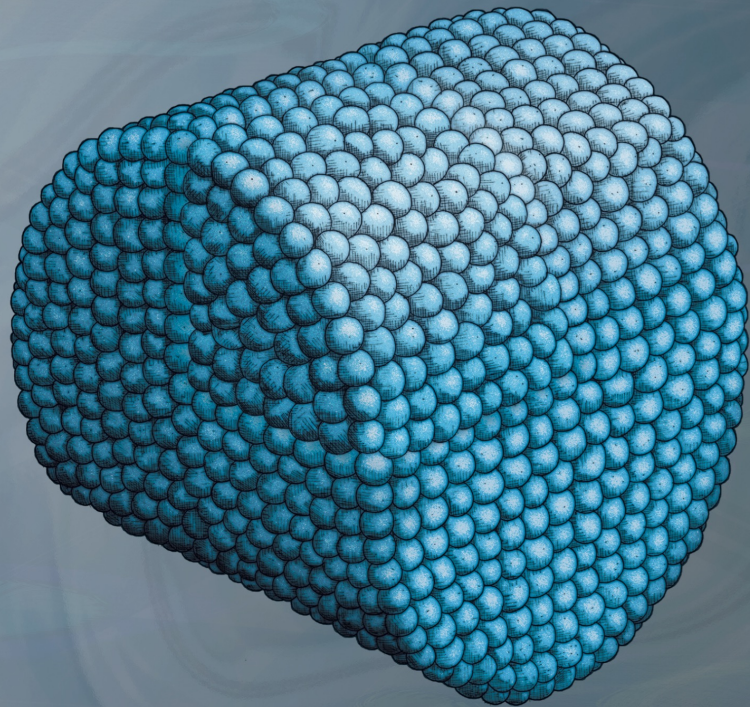


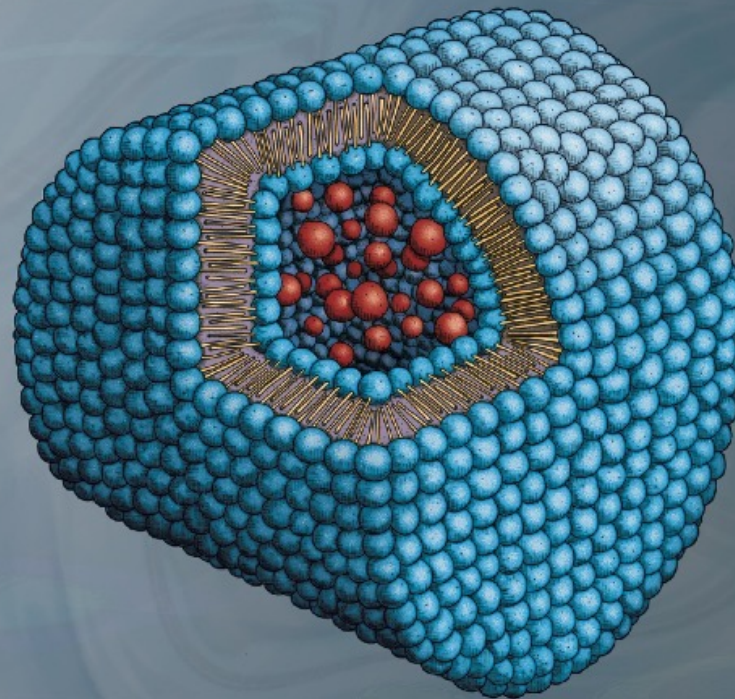
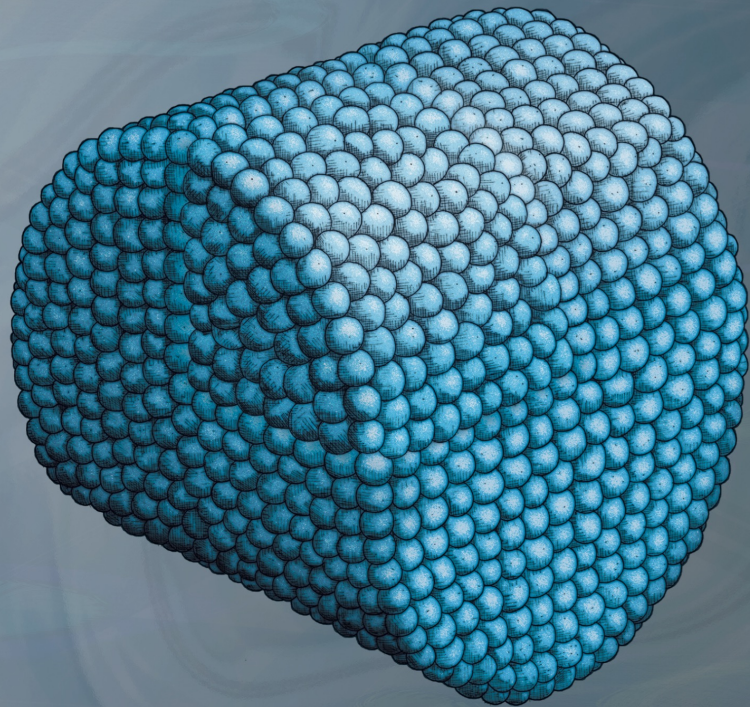


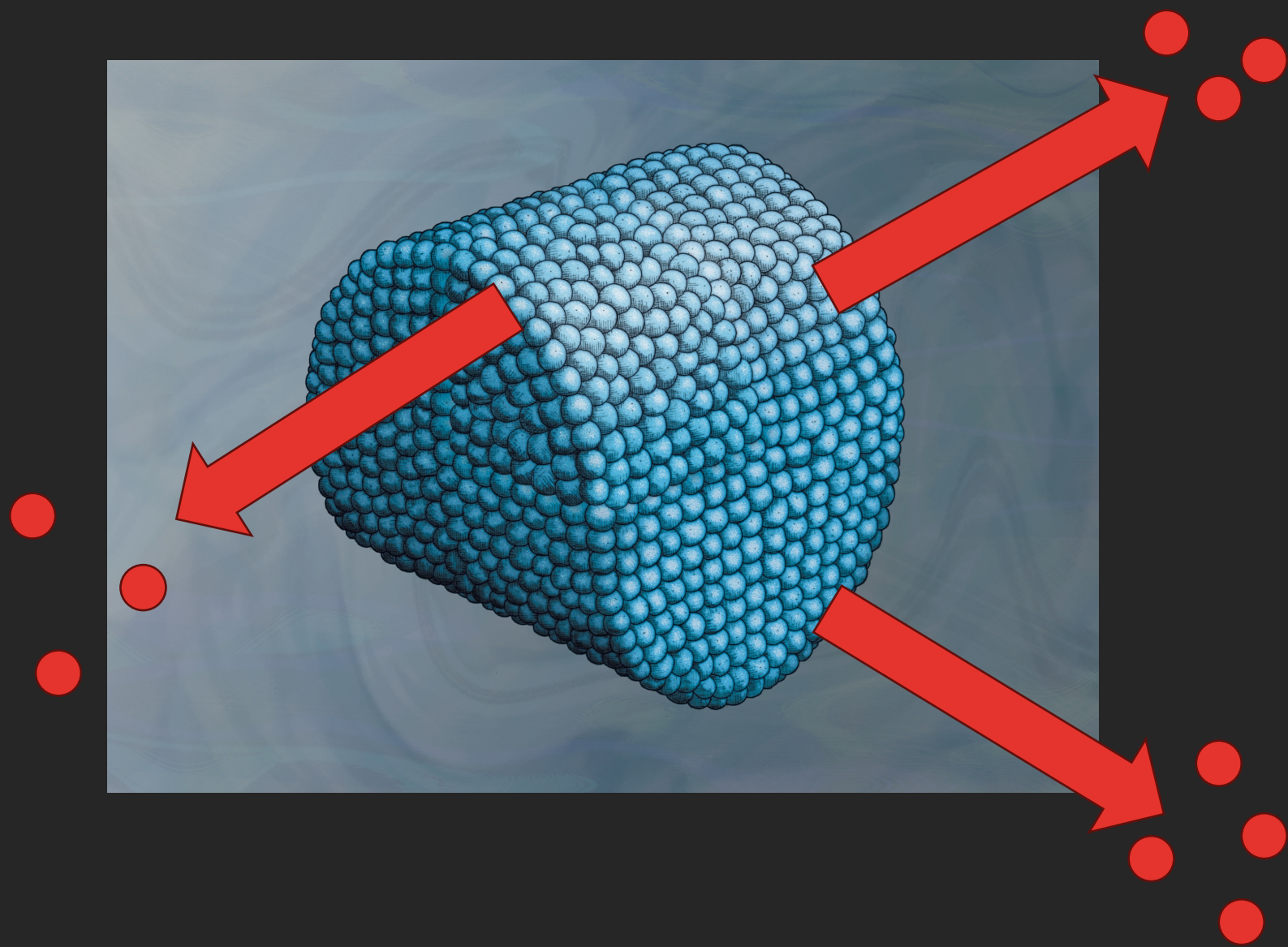




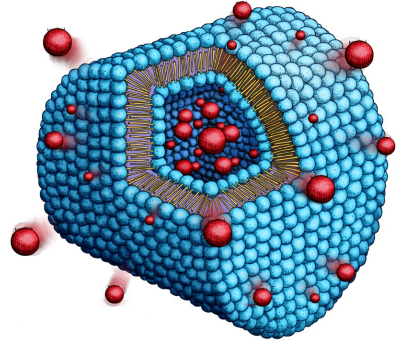






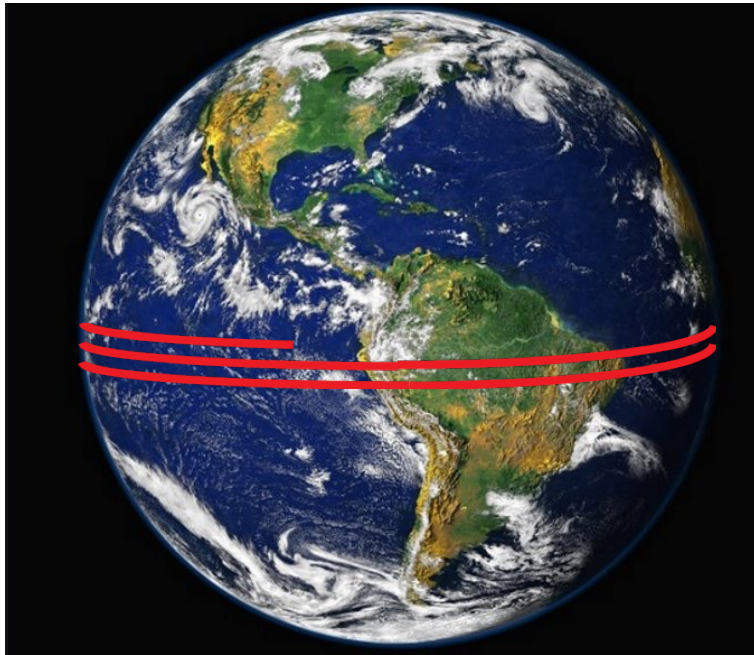


Aus einer Idee wird eine Technologie

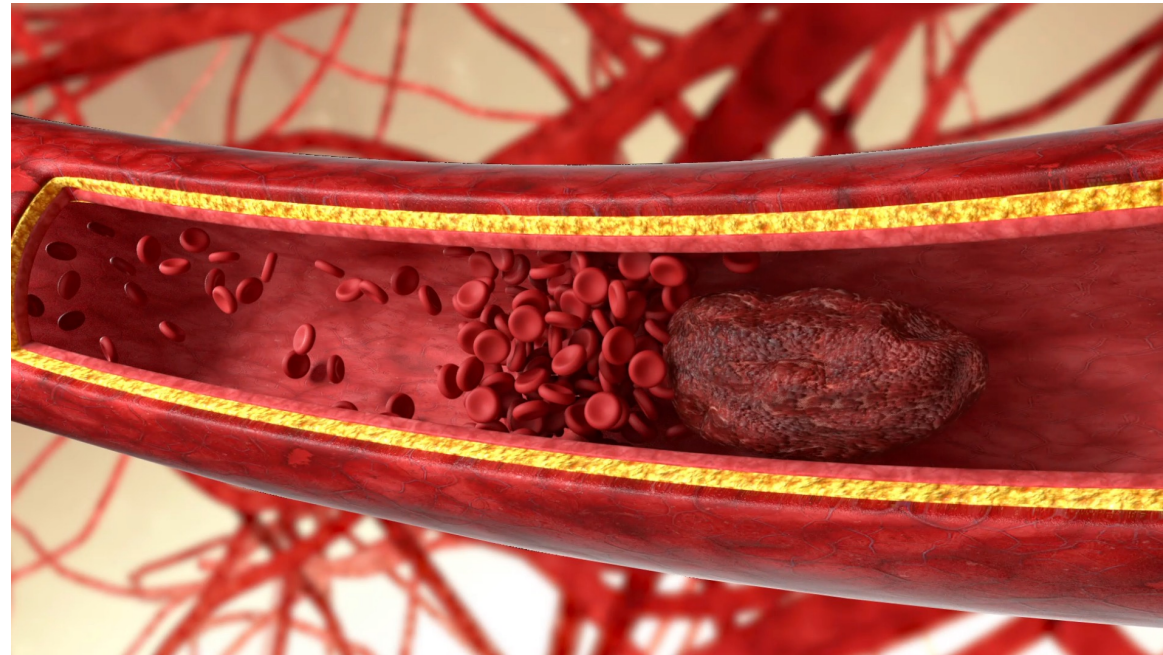




Das Ziel ist schwer zu treffen



100'000 km Blutbahn



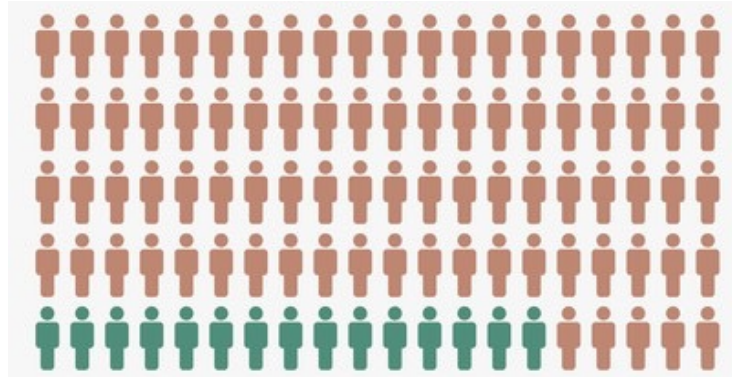
wenige cm Blutgerinnsel

Gezielte Medikamentenverabreichung durch Nanomedizin

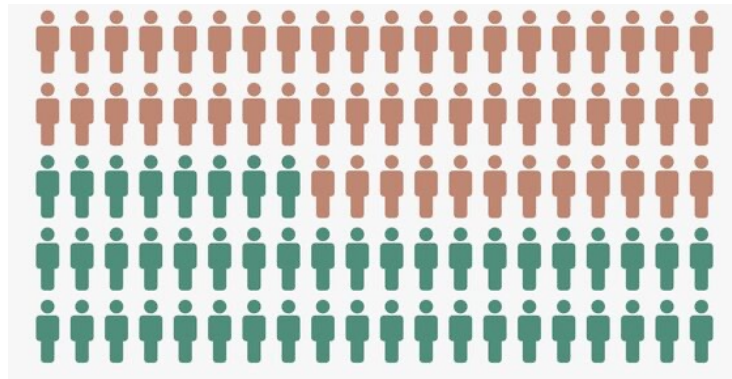


Ziel: Effizienz steigern, negative Effekte minimieren

Blutgerinnsel auflösendes
Standardmedikament:
Thrombolyt



Hirnschlag Patienten:innen
85 % erhalten KEINEN
Thrombolyten

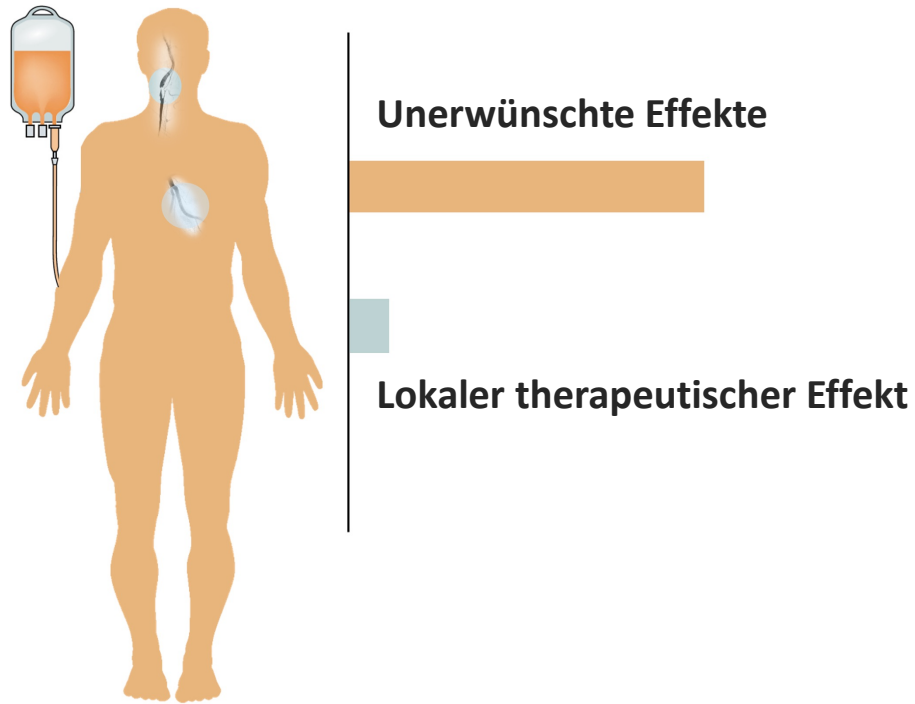


Herzinfarkt Patienten:innen
> 50 % erhalten KEINEN
Thrombolyten

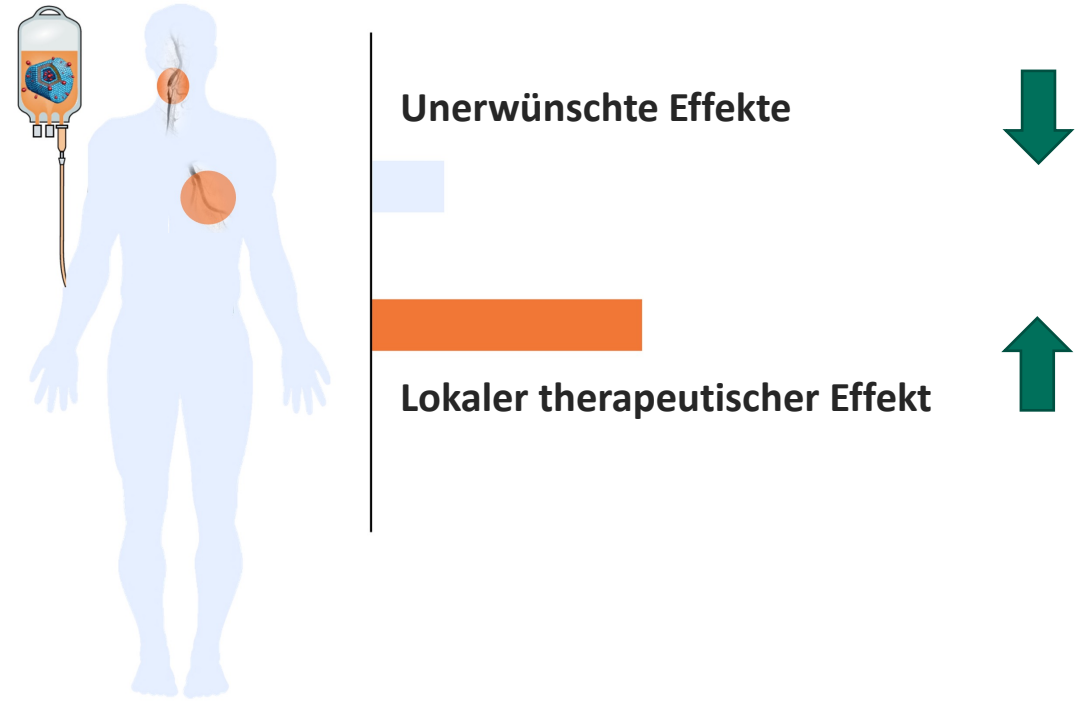
Ziel: Effizienz steigern, negative Effekte minimieren



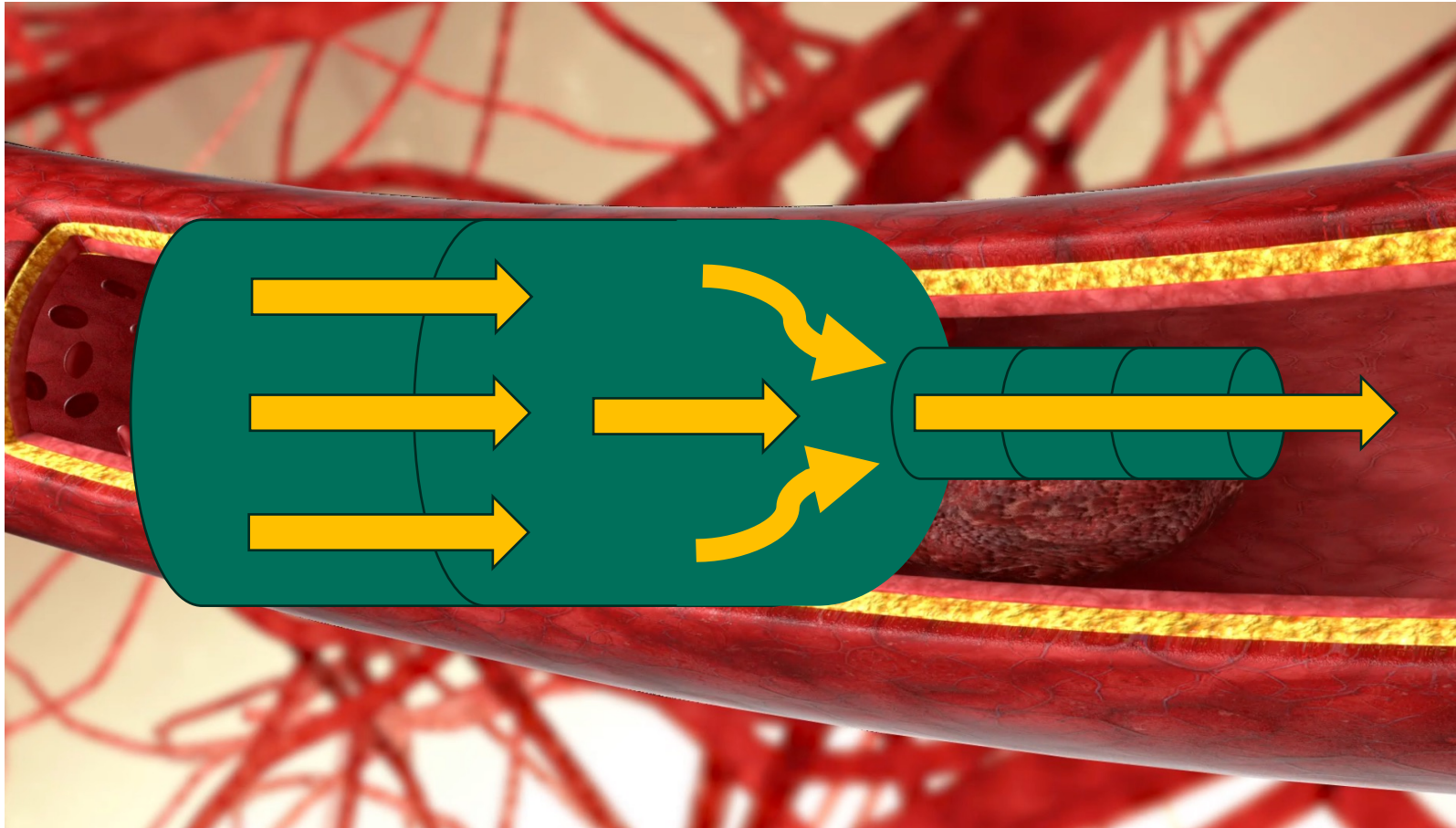
Standardtherapie



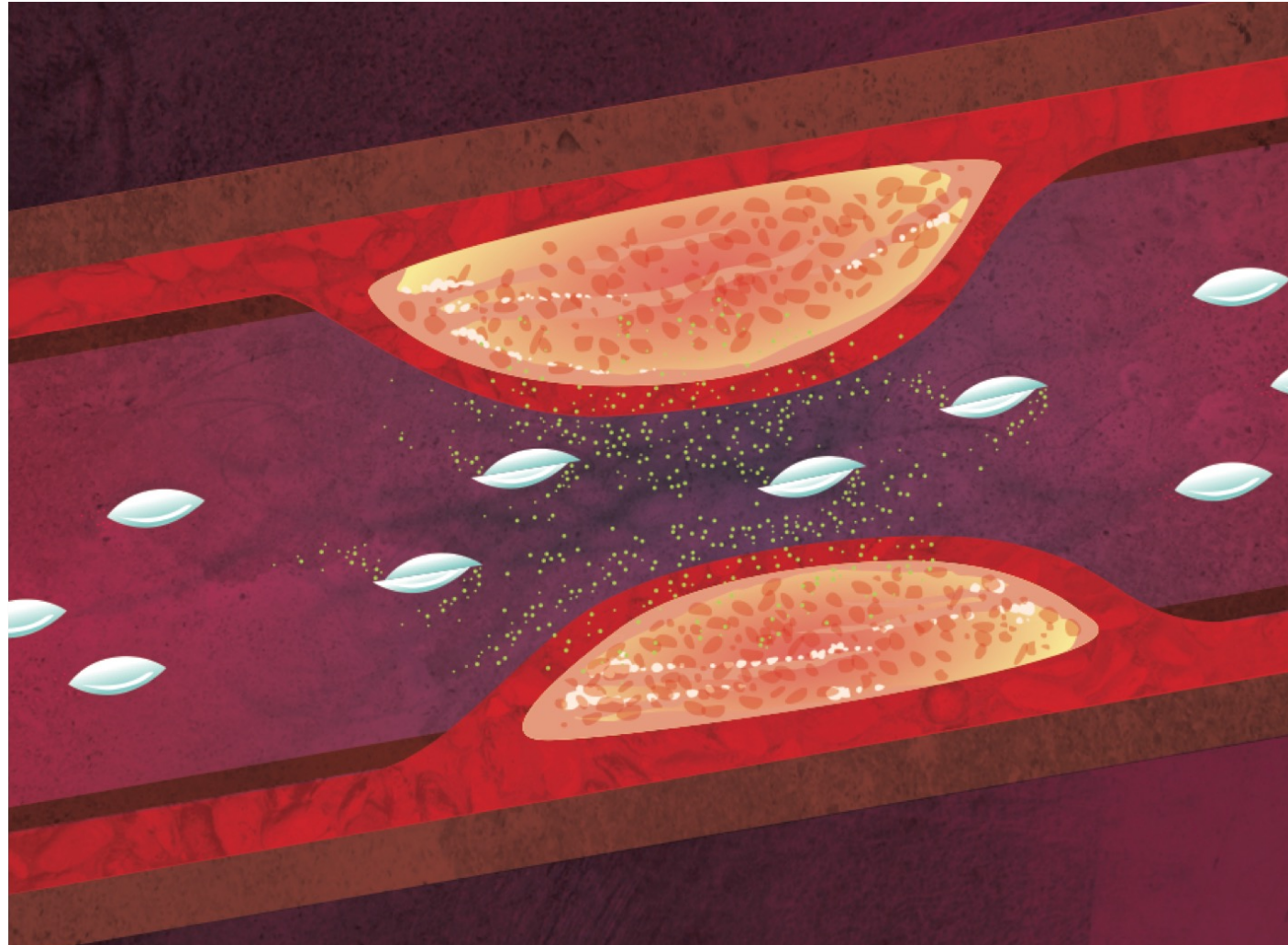
Gezielte Medikamentenfreisetzung



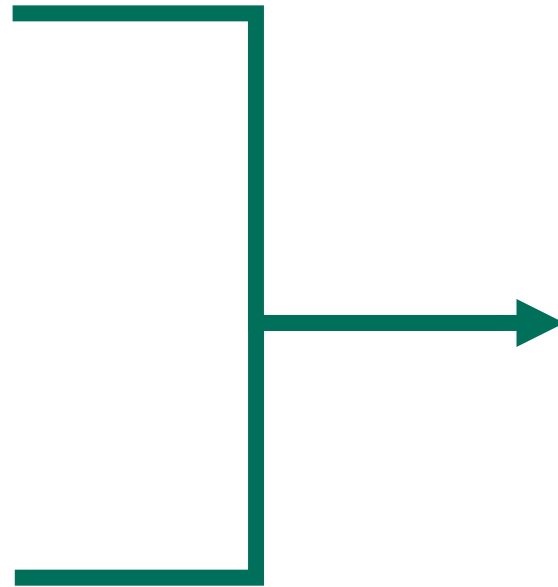
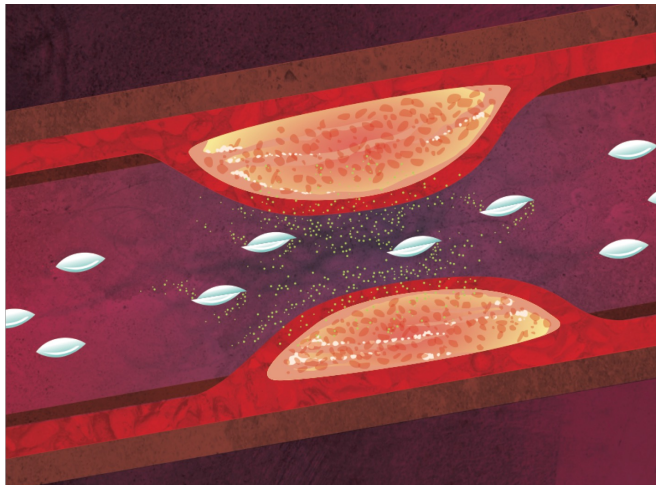
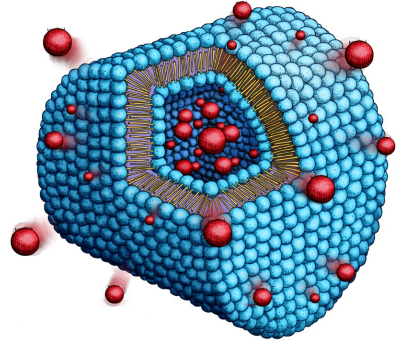
Verschluss einer Arterie führt zu erhöhten lokalen Kräften



Scherkraftänderungen und lokale Medikamentenfreisetzung

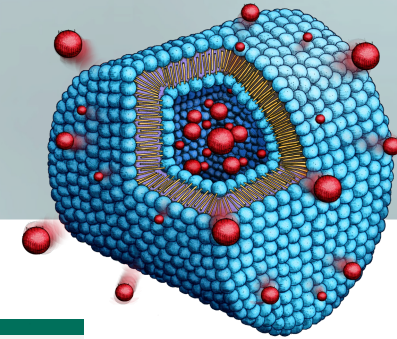


Aus einer Idee wird eine Technologie



acthera

Mechanosensitive Medikamente



Thierry Fumeaux
CEO

fumeaux@actheratx.com

Pierre-Alain Monnard
CSO and Co-Founder

monnard@actheratx.com

<https://acthera-therapeutics.com/>

